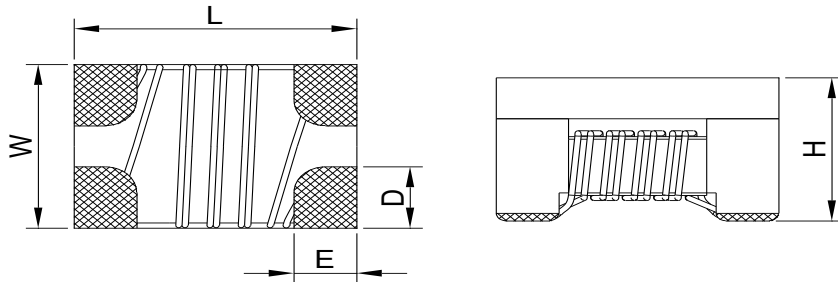


## Product Outline

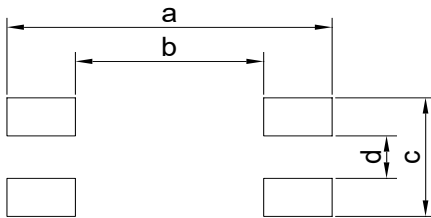
- Wire wound common mode chokes.
- It has good tin coating property.
- Wide band has good impedance characteristics, which can effectively suppress high frequency clutter.
- It is widely used in USB 2.0 interface of PC and peripheral equipment, digital AV equipment, LVDS cable of notebook computer, LCD.
- RoHS compliant.



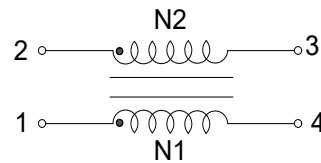
## Dimensions



## Recommended Land Patterns



## Schematics



Unit: mm

Type	L	W	H	D	E	a	b	c	d	Packaging (pcs/reel)
WFCM3225L	3.2±0.2	2.5±0.2	2.5 Max.	0.75	0.55	4.4	1.6	3.5	0.6	2000

Dimensions without tolerance are typical.

## Electrical Characteristics(at 25°C)

Part Number	Inductance (uH) at 100kHz/0.1V	Impedance ① (Ω) at 10MHz	DCR ② (mΩ) Max.	Insulation Resistance (MΩ) Min.	Rated Voltage (Vdc) Max.	Rated Current ③ (mA) Max.
WFCM3225L-110	11+50%/-30%	300 Min.(550 Typ.)	400	10	80	300
WFCM3225L-220	22+50%/-30%	500 Min.(1100 Typ.)	500	10	80	250
WFCM3225L-510	51+50%/-30%	1000 Min.(2600 Typ.)	700	10	80	200
WFCM3225L-101	100+50%/-30%	2200 Min.(5100 Typ.)	1500	10	80	150

Note:

- ① Impedance measured on a 4991A Keysight Technologies or equivalent.
- ② DCR measured on a micro-ohmmeter(Single winding).
- ③ Rated current: The DC current at which the temperature rise is  $\Delta T=40^{\circ}\text{C}$ ( $T_a=25^{\circ}\text{C}$ ), measuring pin1 to 2, short pin3,4.